

RE0506



Blue

Grey

|                         |   |
|-------------------------|---|
| <b>Size</b>             | <b>A5</b>                                       |
| <b>Specification</b>    | <b>80gsm-192 Pages</b>                          |
| <b>Cover</b>            | <b>FRONT SIDE POCKET</b>                        |
| <b>Printing Process</b> | <b>Screen Printing / Foiling / U V Printing</b> |

RE0507



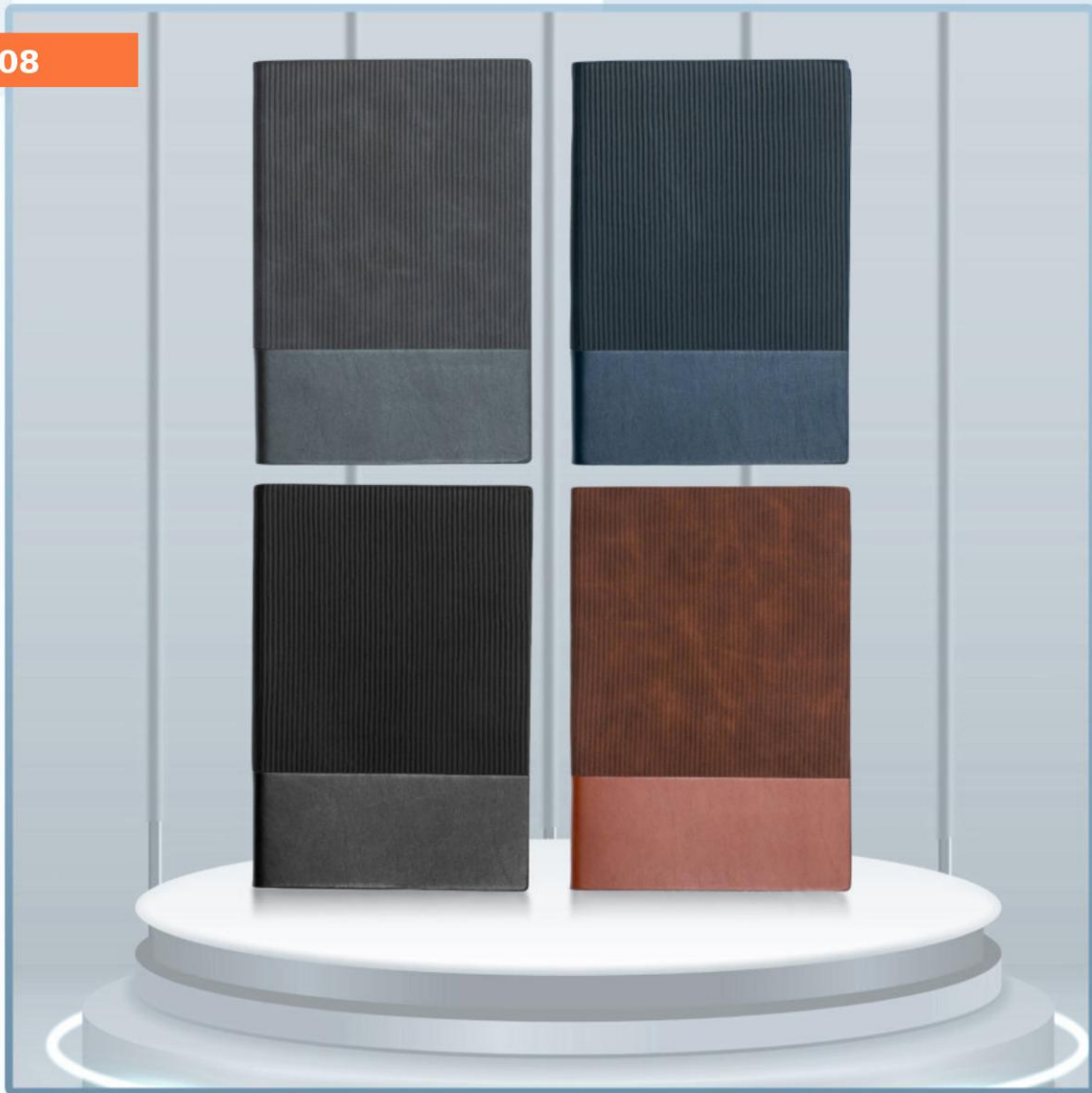
Brown

Turquoise  
Blue

Blue

|                         |   |
|-------------------------|---|
| <b>Size</b>             | <b>A5</b>   |
| <b>Specification</b>    | <b>80gsm-192 Pages</b>                            |
| <b>Cover</b>            | <b>DESINING PU LEATHER COVER WITH METAL PLATE</b> |
| <b>Printing Process</b> | <b>Screen Printing / Foiling / U V Printing</b>   |

**RE0508**



**Dark  
Grey**

**Blue**

**Black**

**Brown**

|                         |                                    |
|-------------------------|------------------------------------|
| <b>Size</b>             | <b>A5</b>                          |
| <b>Specification</b>    | <b>80gsm-192 Pages</b>             |
| <b>Cover</b>            | <b>FLEXY PU LEATHER COVER</b>      |
| <b>Printing Process</b> | <b>Screen Printing / Foiling</b>   |
|                         | <b>Embossing / laser Engraving</b> |

RE0509



**Brown**

**Black**

|                         |  |
|-------------------------|--|
| <b>Size</b>             | <b>A5</b>                                  |
| <b>Specification</b>    | <b>80gsm-192 Pages</b>                     |
| <b>Cover</b>            | <b>FLEXY SOFT COVER , WITH LOCK BUTTON</b> |
| <b>Printing Process</b> | <b>Screen Printing / Foiling</b>           |
|                         | <b>Embossing / laser Engraving</b>         |

**RE0510**



**Blue**

**Black**

**Maroon**

**Brown**

|                         |                                       |
|-------------------------|---------------------------------------|
| <b>Size</b>             | <b>A5</b>                             |
| <b>Specification</b>    | <b>80gsm-192 Pages</b>                |
| <b>Cover</b>            | <b>Pu Velvet Cover / Elastic Lock</b> |
| <b>Printing Process</b> | <b>Screen Printing / Foiling</b>      |
|                         | <b>laser Engraving</b>                |

RE0511



Brown

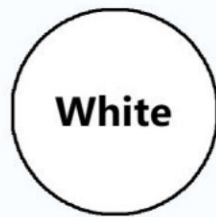
Grey

Blue

Teal Blue

|                         |   |
|-------------------------|---|
| <b>Size</b>             | <b>A5</b>                                       |
| <b>Specification</b>    | <b>80gsm-192 Pages</b>                          |
| <b>Cover</b>            | <b>PEN LOOPI ON FRONT SIDE</b>                  |
| <b>Printing Process</b> | <b>Screen Printing / Foiling / U V Printing</b> |

**RE0512**



|                         |   |
|-------------------------|---|
| <b>Size</b>             | <b>A5</b>                                       |
| <b>Specification</b>    | <b>80gsm-192 Pages</b>                          |
| <b>Cover</b>            | <b>JUTE COVER PEN HOLDER ON TOP SIDE</b>        |
| <b>Printing Process</b> | <b>Screen Printing / Foiling / U V Printing</b> |

**RE0513**



**Brown**

**Blue**

**Grey**

|                         |   |
|-------------------------|---|
| <b>Size</b>             | <b>A5</b>   |
| <b>Specification</b>    | <b>80gsm-192 Pages</b>                                |
| <b>Cover</b>            | <b>Hard Bound Leather Velvet Cover / Elastic Lock</b> |
| <b>Printing Process</b> | <b>Screen Printing / Foiling</b>                      |
|                         | <b>Embossing / laser Engraving</b>                    |

RE0514



Blue

Grey

Brown

Tan

Size

A5

Specification

80gsm-192 Pages

Cover

VALVET PU LEATHER COVER , PEN LOOPI , ELASTIC

Printing Process

Screen Printing / Foiling

Embossing / laser Engraving

RE0515



Sky  
Blue

Blue

Grey

|                         |   |
|-------------------------|---|
| <b>Size</b>             | <b>A5</b>                                 |
| <b>Specification</b>    | <b>80gsm-192 Pages</b>                    |
| <b>Cover</b>            | <b>Canvas Velvet Cover / Elastic Lock</b> |
| <b>Printing Process</b> | <b>Screen Printing / Foiling</b>          |
|                         | <b>Embossing / laser Engraving</b>        |

**RE0516**



**BROWN**

**TEAL  
BLUE**

|                         |   |
|-------------------------|---|
| <b>Size</b>             | <b>A5</b>                                       |
| <b>Specification</b>    | <b>80gsm-192 Pages</b>                          |
| <b>Cover</b>            | <b>PREMIUM SOFT LEATHER, BOTH SIDE SPOUNCH</b>  |
| <b>Printing Process</b> | <b>Screen Printing / Foiling / U V Printing</b> |

RE0517



Blue

Brown

Grey

|                  |  |
|------------------|--|
| Size             | A5   |
| Specification    | 80gsm-192 Pages  |
| Cover            | IMPORTED PU LEADTHER WITH LOOPI COVER                    |
| Printing Process | Screen Printing / Foiling<br>Embossing / laser Engraving |

**RE0518**

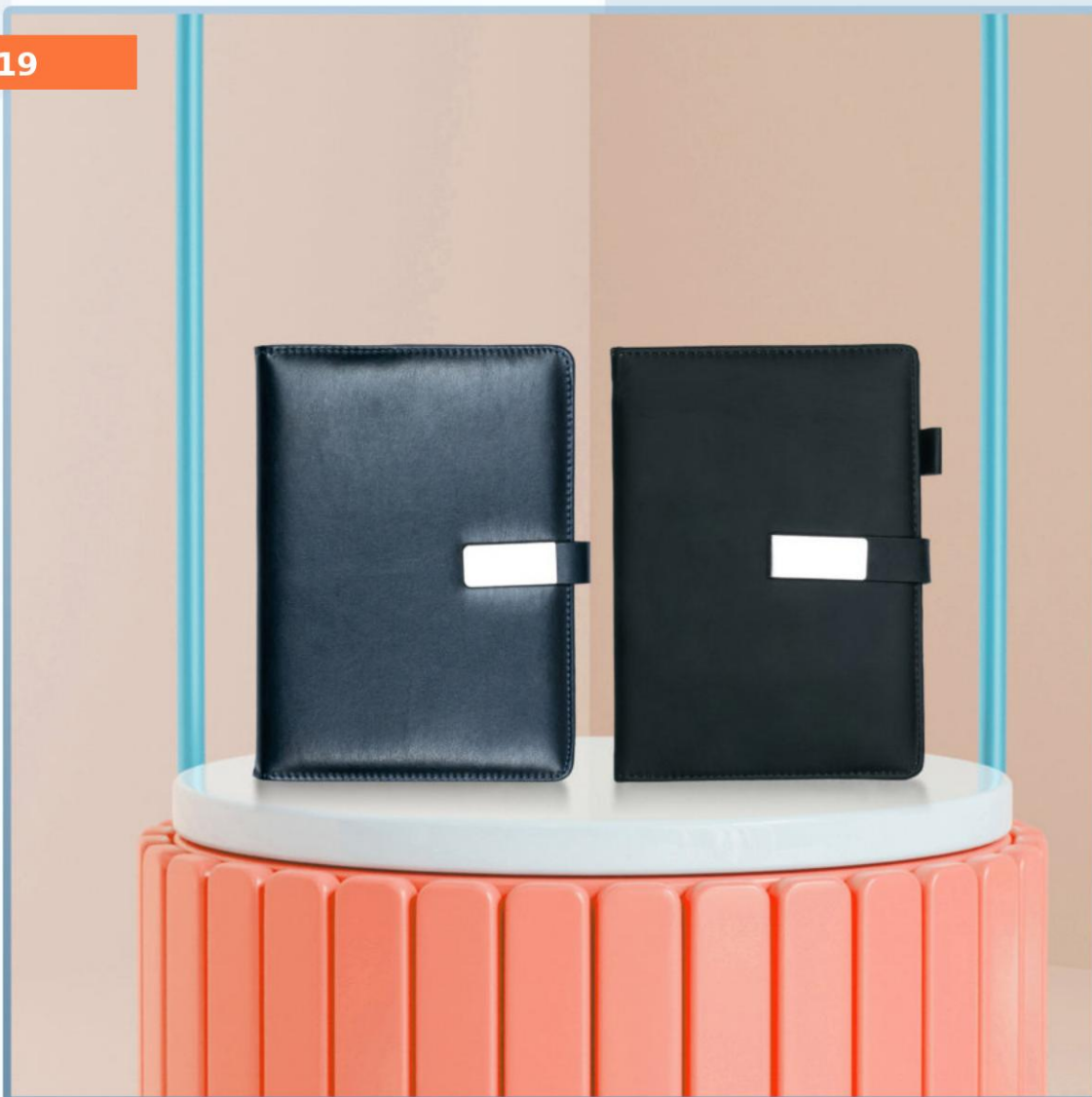


**Blue**

**Grey**

|                         |   |
|-------------------------|---|
| <b>Size</b>             | <b>A5</b>                                       |
| <b>Specification</b>    | <b>80gsm-192 Pages</b>                          |
| <b>Cover</b>            | <b>HARD PESTING PU COVER WITH LOOPI</b>         |
| <b>Printing Process</b> | <b>Screen Printing / Foiling / U V Printing</b> |

RE0519



Blue

Black

|                         |                                    |
|-------------------------|------------------------------------|
| <b>Size</b>             | <b>A5</b>                          |
| <b>Specification</b>    | <b>80gsm-192 Pages</b>             |
| <b>Cover</b>            | <b>SOFT PU LEATHER COVER, LOCK</b> |
| <b>Printing Process</b> | <b>Screen Printing / Foiling</b>   |
|                         | <b>Embossing / laser Engraving</b> |

**RE0520**



**Black**

**Grey**

|                         |   |
|-------------------------|---|
| <b>Size</b>             | <b>A5</b>                                       |
| <b>Specification</b>    | <b>80gsm-192 Pages</b>                          |
| <b>Cover</b>            | <b>BOTH SIDE SPOUNCH , LOOPI ENTIC BUTTON</b>   |
| <b>Printing Process</b> | <b>Screen Printing / Foiling / U V Printing</b> |

**RE0521**



**Black**



**Grey**



**Brown**



**Tan**

|                         |                                    |
|-------------------------|------------------------------------|
| <b>Size</b>             | <b>A5</b>                          |
| <b>Specification</b>    | <b>80gsm-192 Pages</b>             |
| <b>Cover</b>            | <b>PU VELVET SOFT COVER</b>        |
| <b>Printing Process</b> | <b>Screen Printing / Foiling</b>   |
|                         | <b>Embossing / laser Engraving</b> |

RE0522



Green

Brown

|                         |   |
|-------------------------|---|
| <b>Size</b>             | <b>A5</b>                                       |
| <b>Specification</b>    | <b>80gsm-192 Pages</b>                          |
| <b>Cover</b>            | <b>IMPORTED PU , 3 FOLD LOCK SYSTEM</b>         |
| <b>Printing Process</b> | <b>Screen Printing / Foiling / U V Printing</b> |

RE0523



Brown

Blue

Grey

Black

|                  |  |
|------------------|--|
| Size             | A5   |
| Specification    | 80gsm-192 Pages  |
| Cover            | Texture pu leather cover with loop                       |
| Printing Process | Screen Printing / Foiling<br>Embossing / laser Engraving |

RE0524



Blue

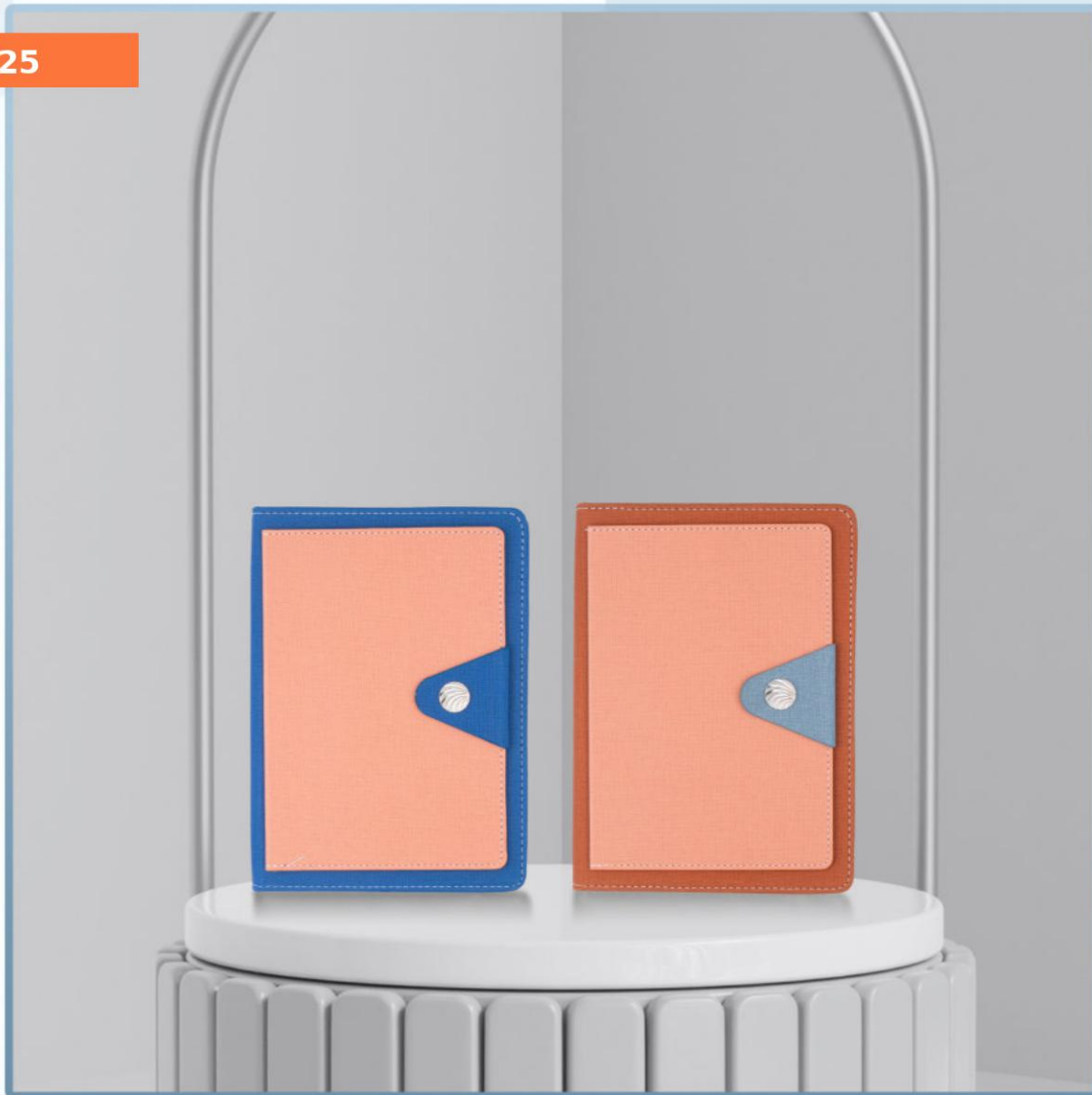
Grey

Tan

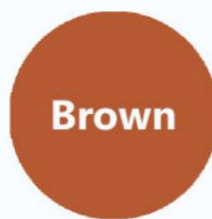
Brown

|                  |  |
|------------------|--|
| Size             | A5   |
| Specification    | 80gsm-192 Pages  |
| Cover            | TEXTURE PU LETAHER SOFT COVER , ENTIC LOCK SYSTEM        |
| Printing Process | Screen Printing / Foiling<br>Embossing / laser Engraving |

RE0525



Blue



Brown

|                         |   |
|-------------------------|---|
| <b>Size</b>             | <b>A5</b>                                       |
| <b>Specification</b>    | <b>80gsm-192 Pages</b>                          |
| <b>Cover</b>            | <b>FLAP COVER IMPORTED JUTE MATERIAL</b>        |
| <b>Printing Process</b> | <b>Screen Printing / Foiling / U V Printing</b> |

RE0526



Yellow



Sky Blue



Grey



Mustard

|                         |   |
|-------------------------|---|
| <b>Size</b>             | <b>A5</b>                                       |
| <b>Specification</b>    | <b>80gsm-192 Pages</b>                          |
| <b>Cover</b>            | <b>2 COLOUR COVER , LOOPI LOCK</b>              |
| <b>Printing Process</b> | <b>Screen Printing / Foiling / U V Printing</b> |

RE0527



Blue

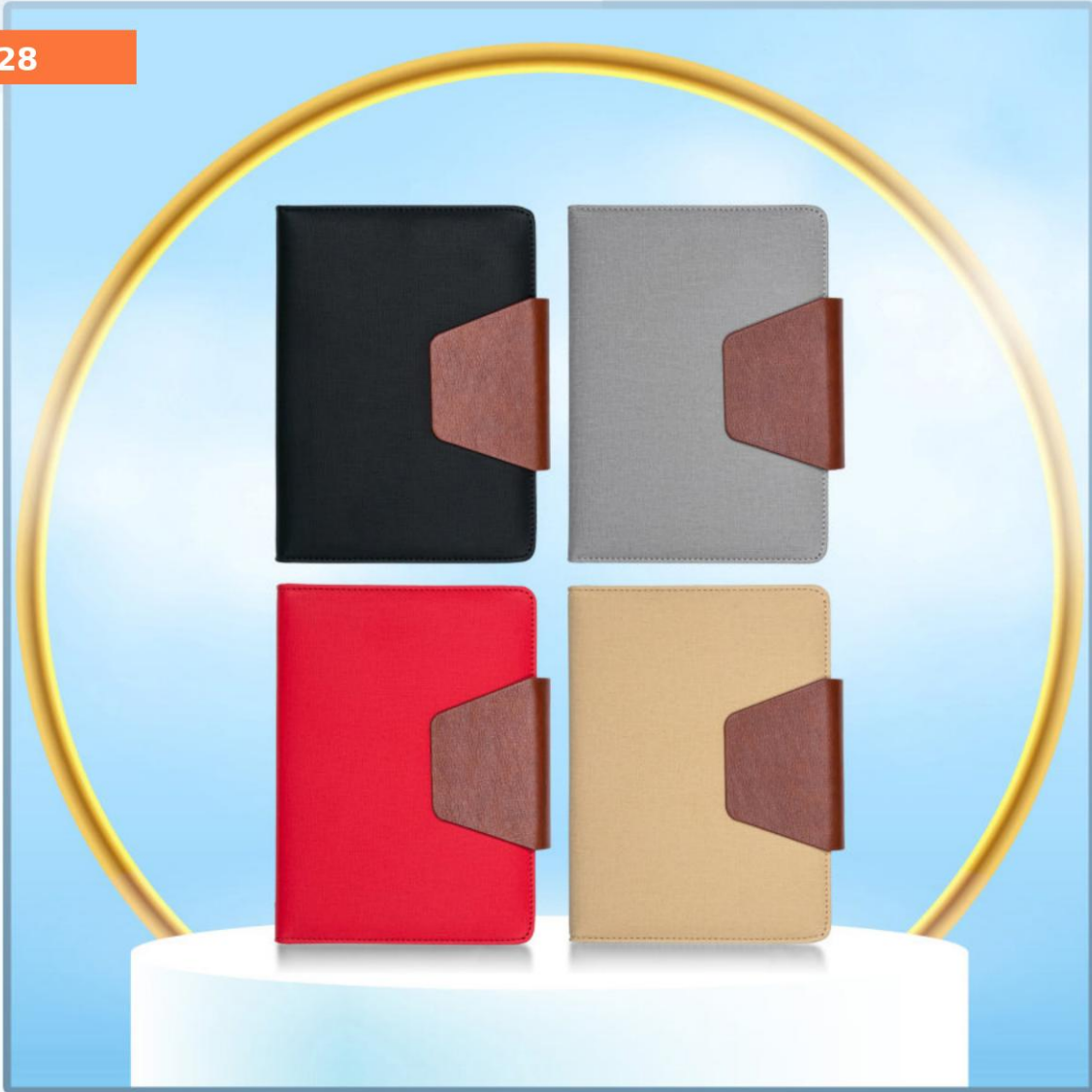
Grey

Brown

Tan

|                         |                                    |
|-------------------------|------------------------------------|
| <b>Size</b>             | <b>A5</b>                          |
| <b>Specification</b>    | <b>80gsm-192 Pages</b>             |
| <b>Cover</b>            | <b>MOBILE POCKET PU SOFT COVER</b> |
| <b>Printing Process</b> | <b>Screen Printing / Foiling</b>   |
|                         | <b>Embossing / laser Engraving</b> |

RE0528



Black

Grey

Red

Cream

|                         |   |
|-------------------------|---|
| <b>Size</b>             | <b>A5</b>   |
| <b>Specification</b>    | <b>80gsm-192 Pages</b>  |
| <b>Cover</b>            | <b>BOTH SIDE SPOUNCH CANVAS COVER , PU LEATHER LOOPI LOCK</b> |
| <b>Printing Process</b> | <b>Screen Printing / Foiling</b>                              |
|                         | <b>Embossing / laser Engraving</b>                            |

RE0529



Blue

Brown

Brown

|                         |  |
|-------------------------|--|
| <b>Size</b>             | <b>A5</b>  |
| <b>Specification</b>    | <b>80gsm-192 Pages</b>   |
| <b>Cover</b>            | <b>IMPORTED GLOS Y COVER FRONT SIDE<br/>DESIGN ON COVER LOCK LOOPI</b> |
| <b>Printing Process</b> | <b>Screen Printing / Foiling / U V Printing</b>                        |

RE0530



Grey

Brown

|                         |   |
|-------------------------|---|
| <b>Size</b>             | <b>A5</b>   |
| <b>Specification</b>    | <b>80gsm-192 Pages</b>  |
| <b>Cover</b>            | <b>IMPORTED VELVET MATERIAL<br/>ENVELOPE POCKET COVER ON TOP SIDE</b> |
| <b>Printing Process</b> | <b>Screen Printing / Foiling / U V Printing</b>                       |

RE0531



Dark  
Grey

Light  
Grey

Blue

|                         |   |
|-------------------------|---|
| <b>Size</b>             | <b>A5</b>                                       |
| <b>Specification</b>    | <b>80gsm-192 Pages</b>                          |
| <b>Cover</b>            | <b>MIDDELE DESIGN AND LOOPI COVER</b>           |
| <b>Printing Process</b> | <b>Screen Printing / Foiling / U V Printing</b> |

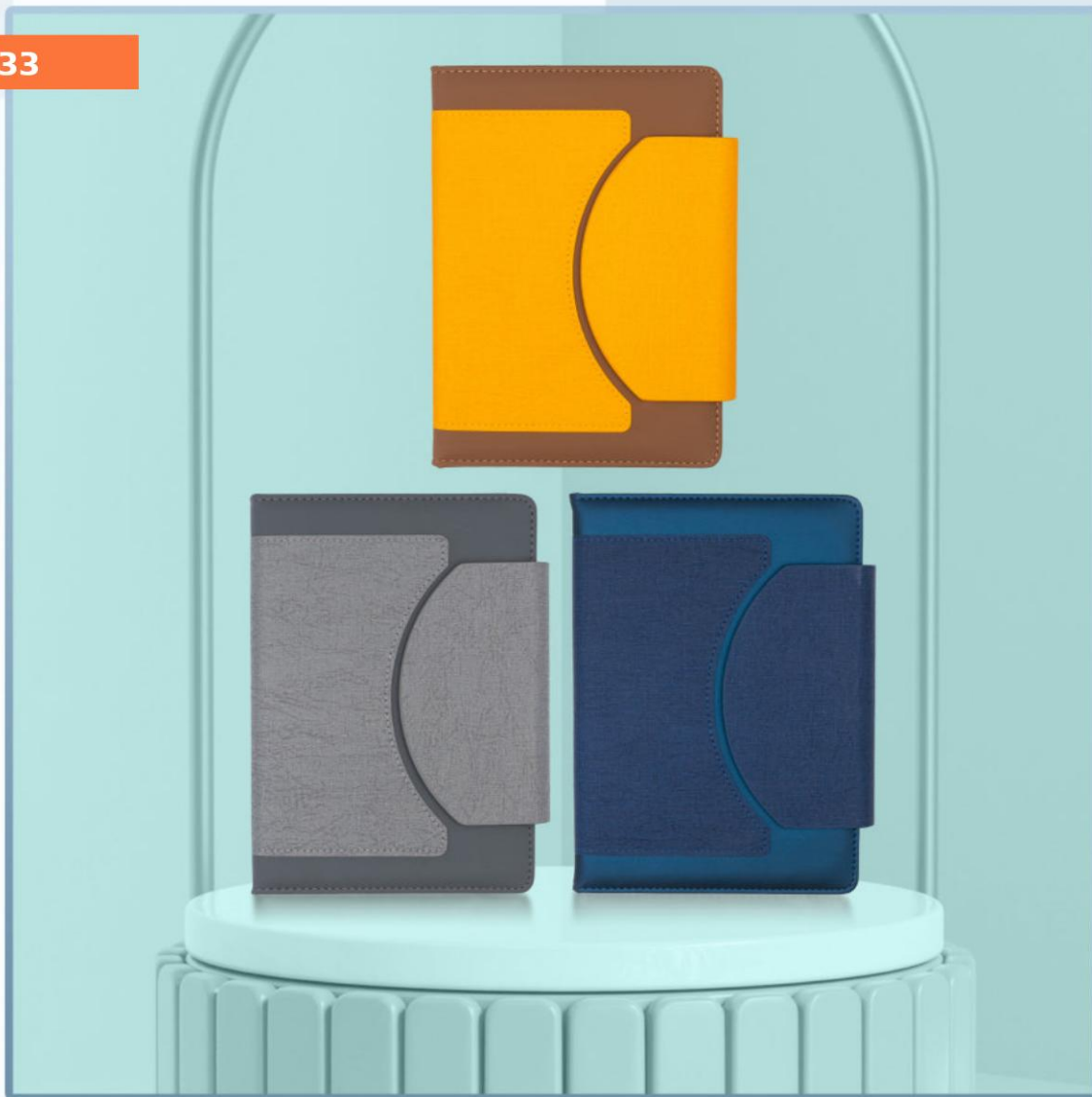
RE0532



Brown

|                         |   |
|-------------------------|---|
| <b>Size</b>             | <b>A5</b>                                       |
| <b>Specification</b>    | <b>80gsm-192 Pages</b>                          |
| <b>Cover</b>            | <b>FRONT SIDE POCKET AND ENVELOPE POCKET</b>    |
| <b>Printing Process</b> | <b>Screen Printing / Foiling / U V Printing</b> |

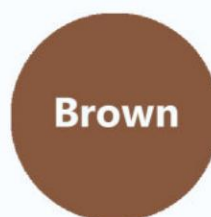
RE0533



Grey



Blue



Brown

|                         |   |
|-------------------------|---|
| <b>Size</b>             | <b>A5</b>                                       |
| <b>Specification</b>    | <b>80gsm-192 Pages</b>                          |
| <b>Cover</b>            | <b>DESINABLE 3 FOLD COVER</b>                   |
| <b>Printing Process</b> | <b>Screen Printing / Foiling / U V Printing</b> |